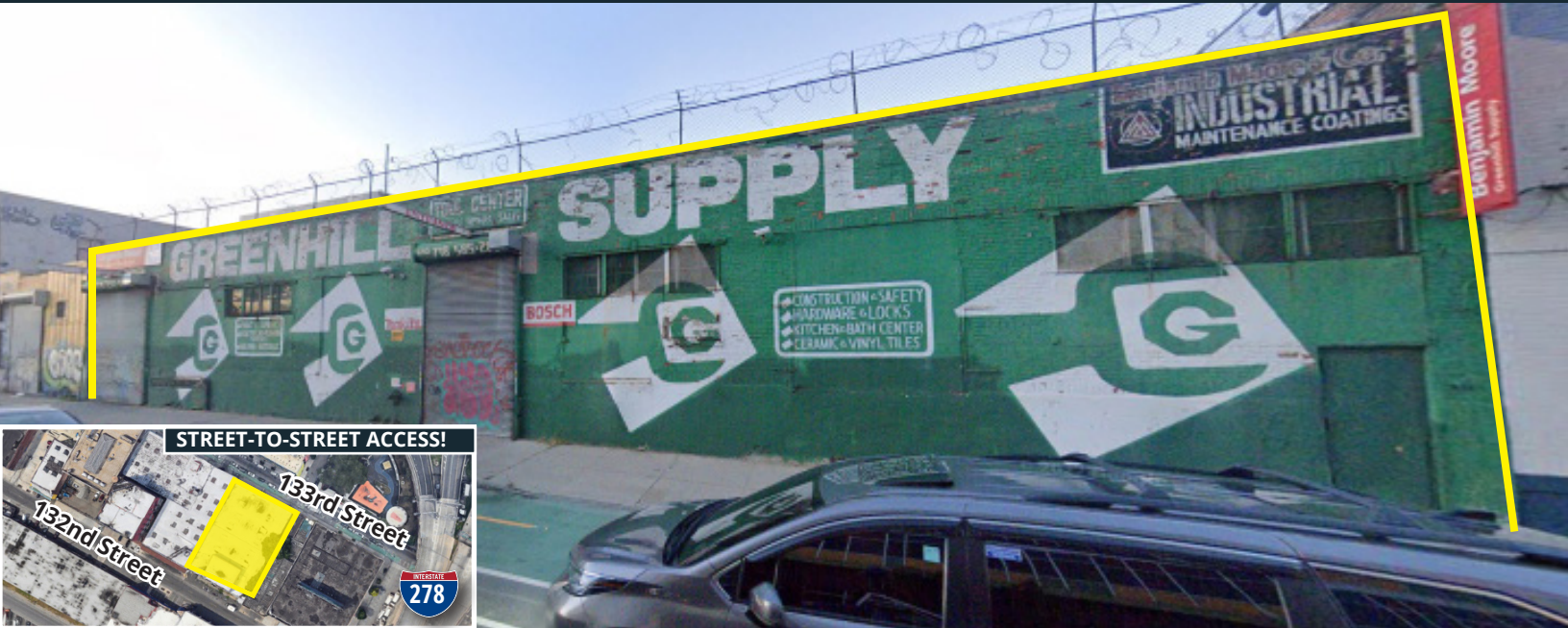


**EXCLUSIVE**

# PRIME SOUTH BRONX: 28,250 SF WAREHOUSE WITH TWO STREET FRONTAGE!

630 E. 133RD STREET BRONX NY, 10454



## PROPERTY OVERVIEW

- **SIZE:** 28,250 SF WAREHOUSE
- **BLOCK:** 2546 LOT: 67
- **TAXES:** \$114,355
- **ZONING:** M1-2

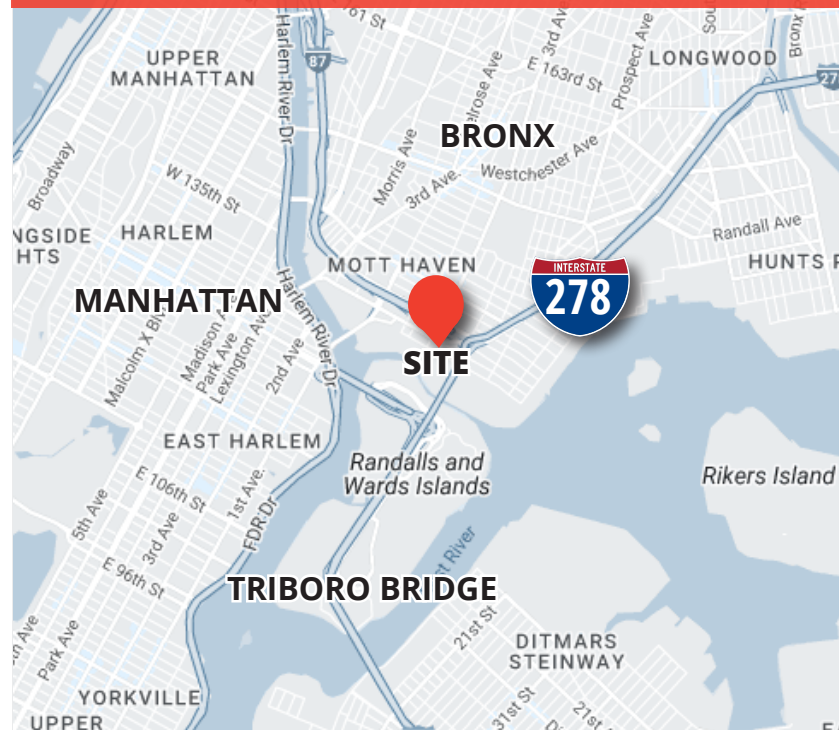
## PROPERTY FEATURES

- 26,250 SF GROUND FLOOR WAREHOUSE
- **2,000 SF 2ND FLOOR OFFICE AND STORAGE**
- EXTERIOR DOCKS AND DRIVE IN RAMP
- 15 FOOT CEILING HEIGHTS
- SPRINKLER SYSTEM
- HEAVY POWER

## ACCESS:

- MINUTES TO: 6
- WALK TO: Metro-North Railroad

## LOCATED AT THE FOOT OF TRIBORO BRIDGE AND I-278!



## EXCLUSIVE AGENTS

**EITAN AGBASHOFF**  
(718) 786-5050 x201  
eitan@greiner-maltz.com

**GUY SOLO**  
(347) 327-4001  
gsolo@greiner-maltz.com

**GREINER-MALTZ**  
REAL ESTATE

Creating Opportunities Together  
WWW.GREINER-MALTZ.COM

Any information set forth herein has been obtained from sources deemed reliable, however, we have not verified it, and make no representation or warranty of any kind, including without limitation: condition: either latent or patent, size or manner of construction of the property, compliance with local law, and environmental conditions. All information submitted herein is subject to errors and omissions, and the right of our principal(s), to withdraw, modify, or condition the listing with-out prior notice. Broker cooperation encouraged.



**EXCLUSIVE**

# **PRIME SOUTH BRONX: 28,250 SF WAREHOUSE WITH TWO STREET FRONTAGE!**

**EAST 630 E. 133RD STREET BRONX NY, 10454**

**INTERIOR PHOTOS:**



**EXCLUSIVE AGENTS**

**EITAN AGBASHOFF**  
(718) 786-5050 x201  
eitan@greiner-maltz.com

**GUY SOLO**  
(347) 327-4001  
gsolo@greiner-maltz.com

**GREINER-MALTZ**  
REAL ESTATE

Creating Opportunities Together  
WWW.GREINER-MALTZ.COM

Any information set-forth herein has been obtained from sources deemed reliable, however, we have not verified it, and make no representation or warranty of any kind, including without limitation: condition: either latent or patent, size or manner of construction of the property, compliance with local law, and environmental conditions. All information submitted herein is subject to errors and omissions, and the right of our principal(s), to withdraw, modify, or condition the listing with-out prior notice. Broker cooperation encouraged.